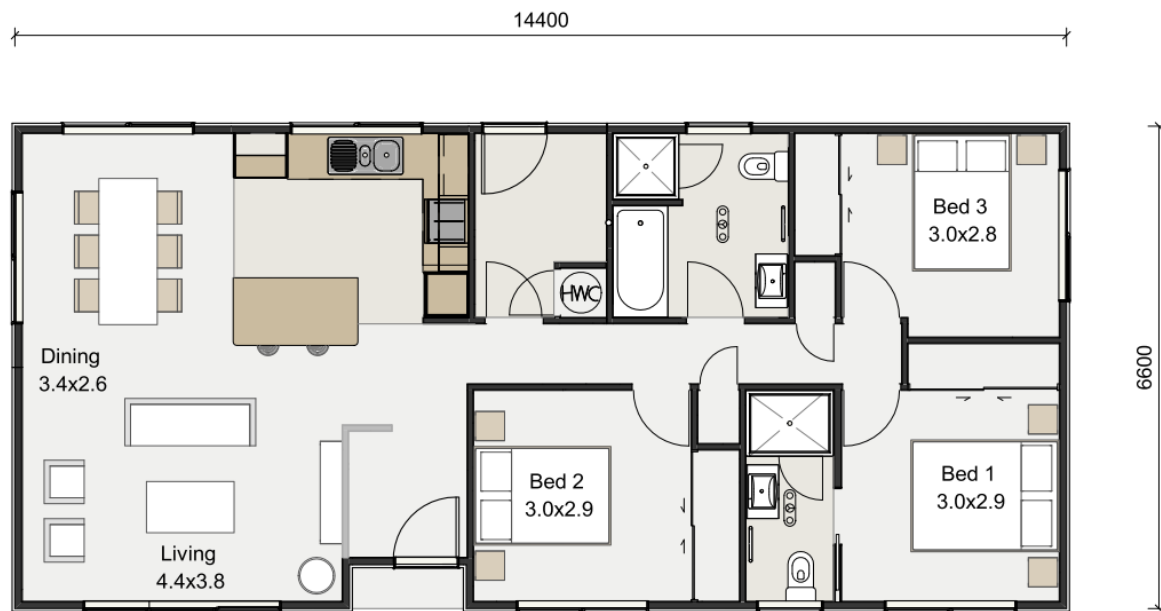




## First Choice 95, Hamilton

95 m<sup>2</sup>, 3 bedroom, 2 bathroom, 1 laundry, 1 living/dining/kitchen



- Three bedroom, 2 bathroom FC95 with boxed gable end extensions
- Seaspray zone upgrades with Colorsteel Maxx roof
- Zone 3 insulation for Central Plateau
- Very high wind zone
- 2 phase electrical set up
- Front door entry
- Bathroom & en-suite
- Kitchen upgraded to L shape with floating island
- Extra sliding door in living space as per rendering (instead of the window shown in above plan)
- Fully decorated with Resene paint to exterior and interior and floor coverings

### Optional extras:

- Delivery onto standard foundations
- Building and Resource consents
- Site services, Council levy's
- Baseboards, decks, steps and rails